

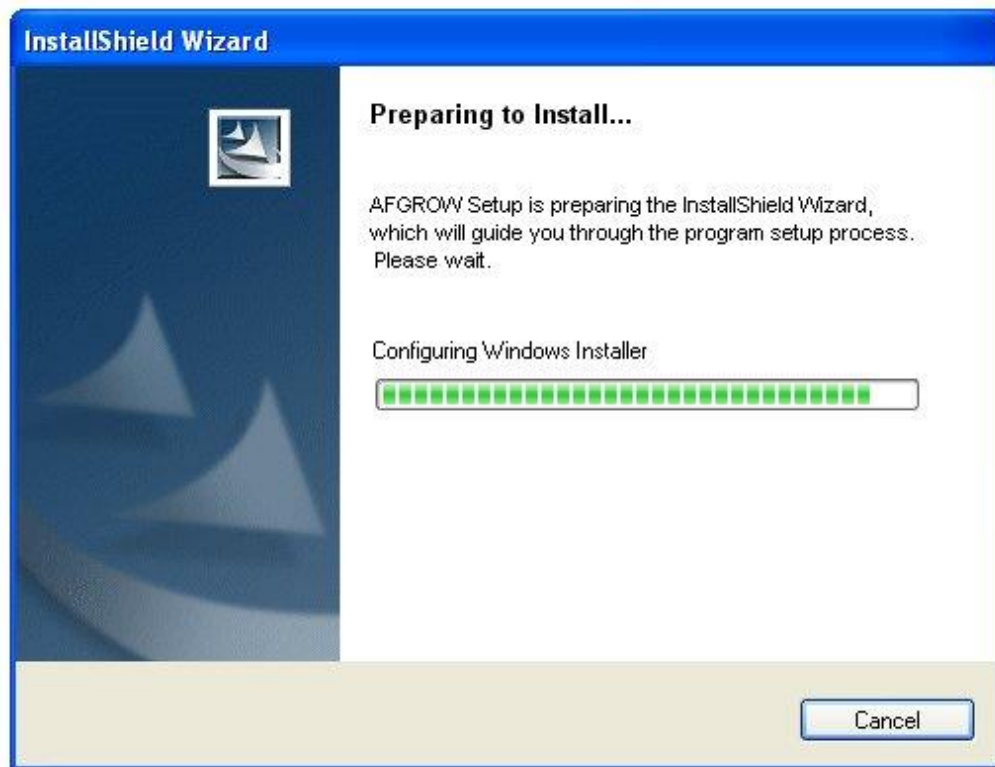
AFGROW, Version 5.3

Installation Instructions

AFGROW, Version 5.3 (64 bit) installs on Windows 10, 8, 7, and VISTA SP2. If you have a previous version of AFGROW installed on your PC, it is recommended that you remove it using the add/remove programs utility in the Windows Control Panel.

AFGROW must be installed by a System Administrator since there are a few libraries that must be registered during installation.

Begin installation by running the setup.exe file. If you have downloaded the zipped AFGROW installation file, extract the contents in a temporary directory and run the setup program from that location. When the installation begins, it may take some time before the first installation dialog appears¹.

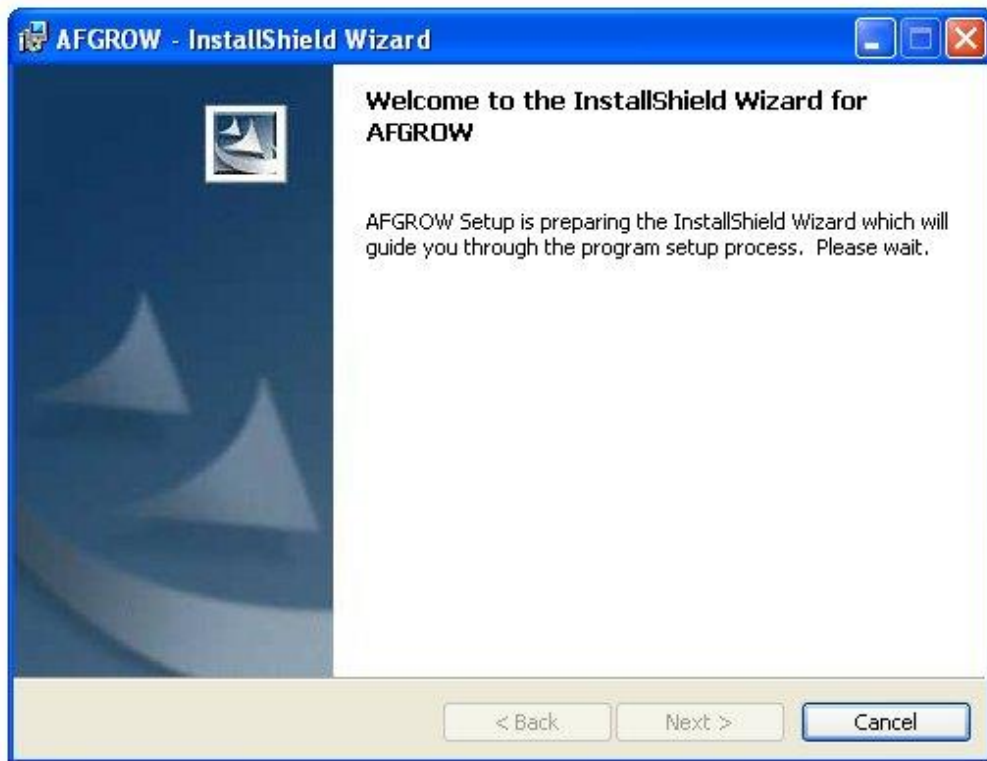


¹ VISTA users note that you will be asked to confirm that you wish to continue. If you do not grant permission, the installation will fail after some additional time. Check the windows status bar for indication of this confirmation dialog since it may be hidden behind another dialog box on your desktop.

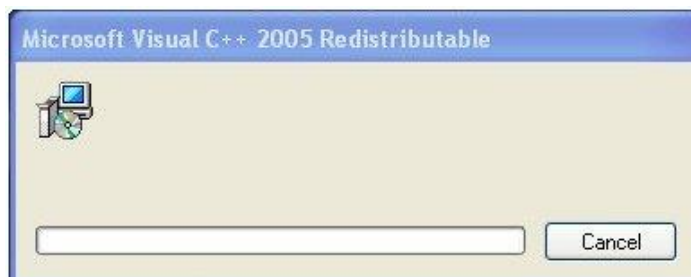
Once the configuration has been completed, a dialog will appear to notify the user that the installation process is ready to begin.



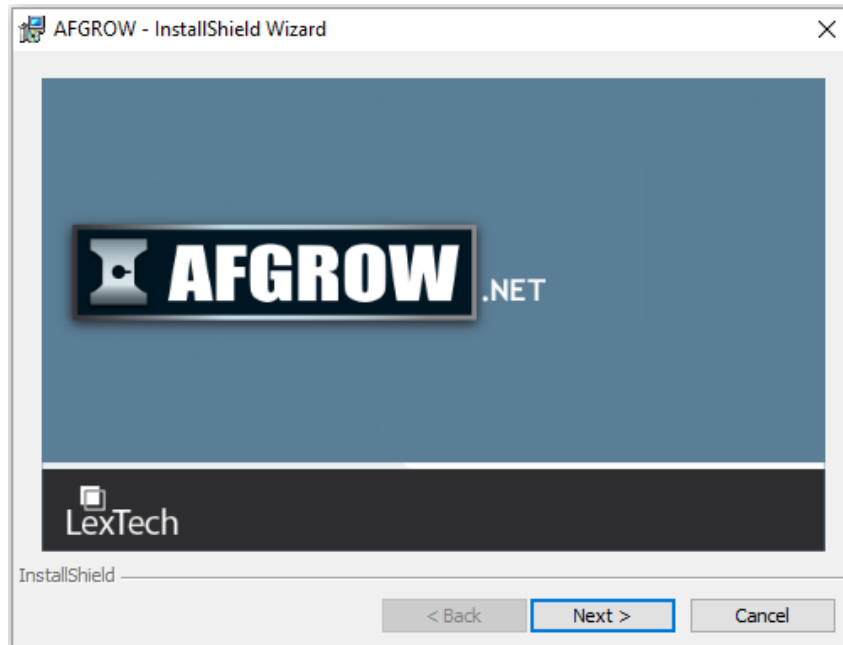
The AFGROW installation Wizard will then begin the step-by-step installation process.



The first step in the process requires certain Microsoft® Visual C++ redistributable libraries to be installed.



When this is completed, the Wizard displays the new AFGROW splash screen and waits for the user to select the next button to proceed with the installation, or to select the cancel button to end the process.



As the installation continues, the AFGROW End-User License Agreement will be displayed. It contains some important information that users should read and understand before indicating whether the terms are acceptable.



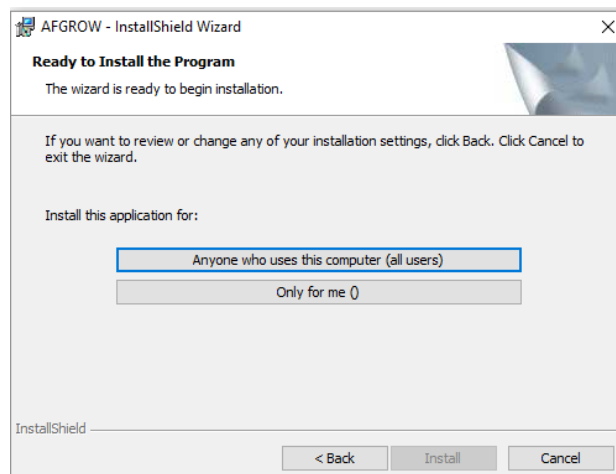
The user must accept the terms before the installation process can proceed when the Next button is selected.

The next step permits the user to select the type of installation desired.

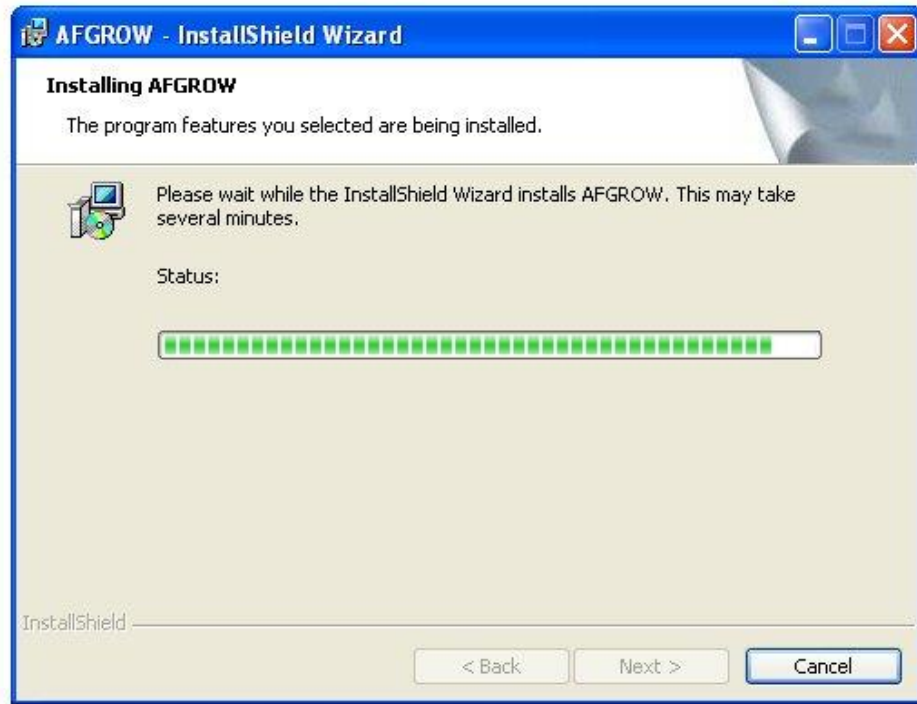


The typical installation includes the full multiple point advanced model database solution for two, non-symmetric corner cracks at a hole. This database is approximately 600 MB and is not required if the multiple point option is not required. The minimal installation includes the 2-point advanced model database, and requires less hard drive space.

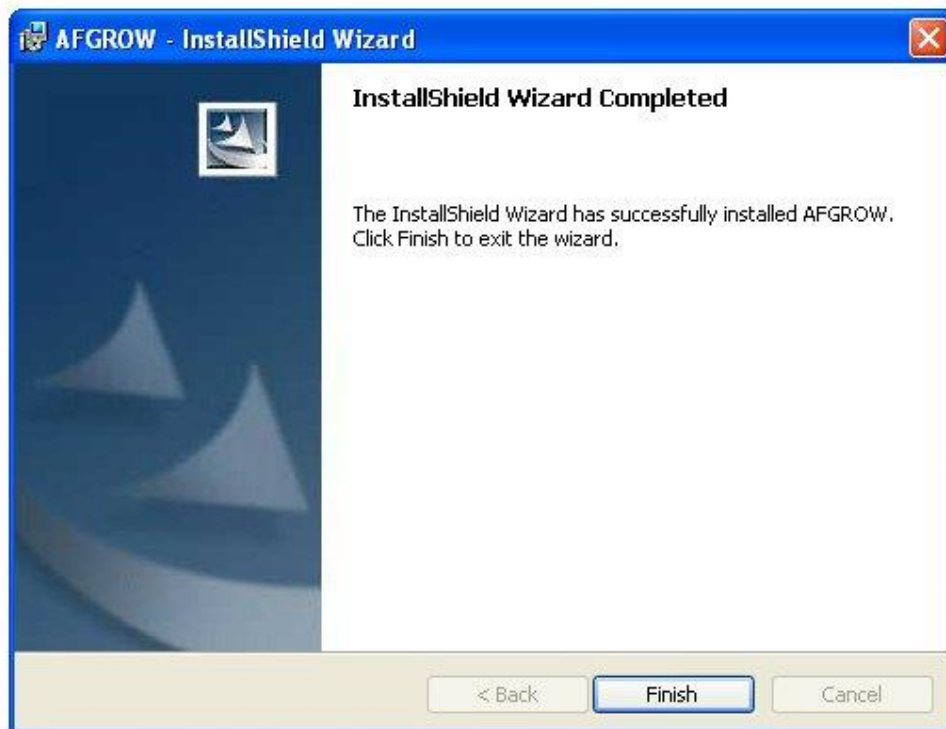
When the Next button is selected, a dialog box will display the user's installation settings and permit the user to go back, cancel, or continue with the installation process.



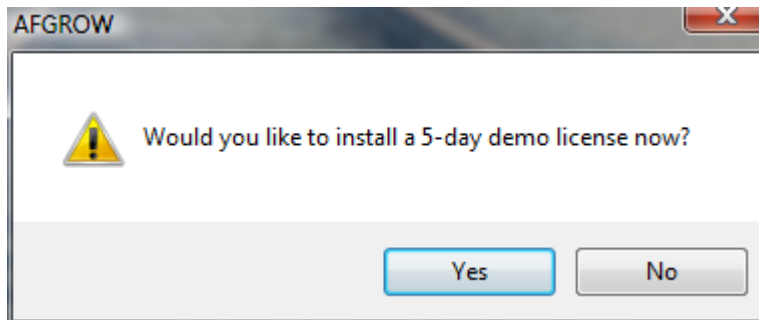
When the Install button is selected, the AFGROW software, libraries, and required data will be copied to the installation directory.



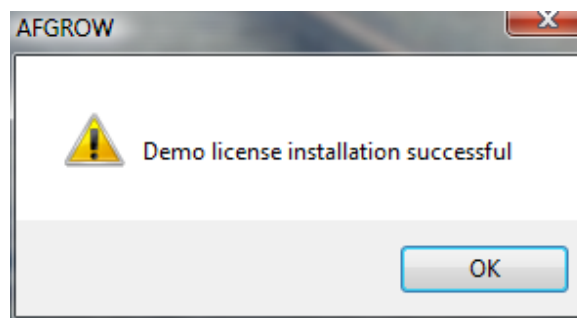
When finished, the final Wizard dialog is displayed and the user is prompted to select Finish



AFGROW, Version 5 can be installed with a 5-day demonstration license. It may be used for evaluation purposes during this period. The When AFGROW is opened for the first time, the following dialog will appear to allow this license to be installed.



If the demonstration license is desired, selecting yes will allow the 5-day evaluation period to begin. When complete, the following dialog will indicate a successful license installation.



It is not possible to obtain additional evaluation periods by removing and re-installing AFGROW on the same PC.

Obtaining a Permanent AFGROW License

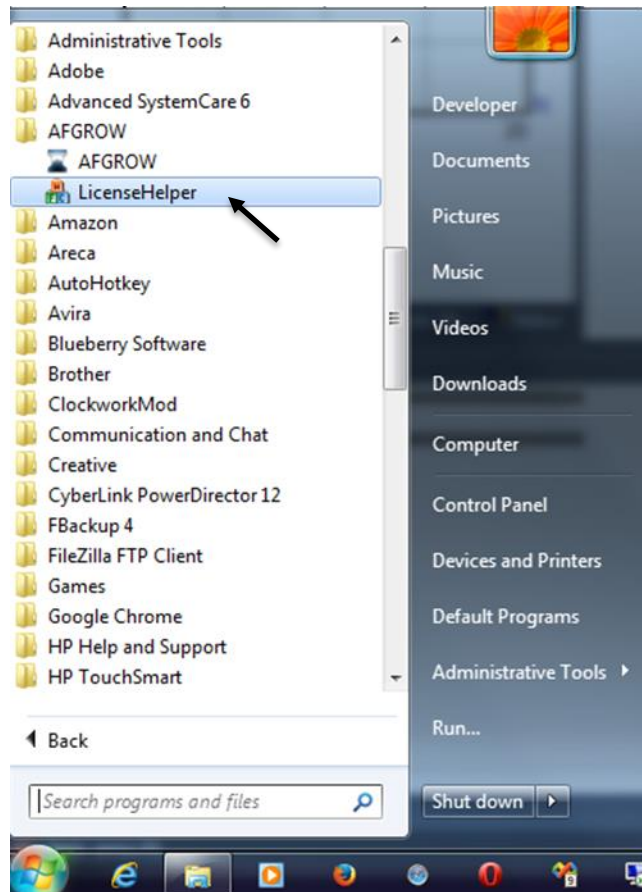
Single node and network licenses are available. Please refer to the AFGROW Web Page (<http://www.afgrow.net/>) or contact LexTech at 937-438-0300 (al@lextechcentral.com) for pricing information.

When a user purchases single or multiple licenses, LexTech will issue the license(s) to the purchaser. The United States Commerce Department requires LexTech to maintain a record of where and to whom the software has been distributed. This information will never be sold or delivered for any other commercial purposes.

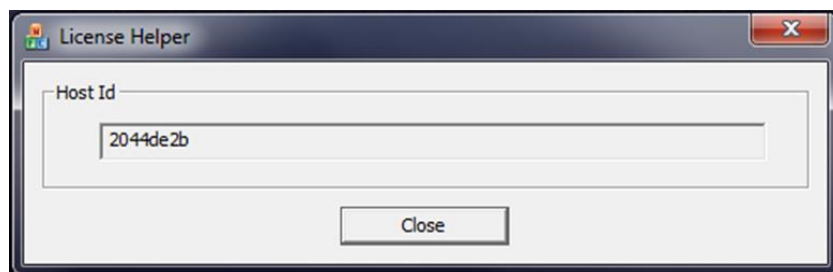
Users also gain access to the AFMAT database for one year with any license purchase. After one year, users may continue to access the database by purchasing a yearly maintenance agreement. The AFMAT database contains data for over 600 materials and now has downloadable tabular look up material files for over 50 materials. If you currently have a license with up to date maintenance and do not have access to the database, please contact LexTech at info@lextechcentral.com to gain access.

The following steps are required to obtain a single node license:

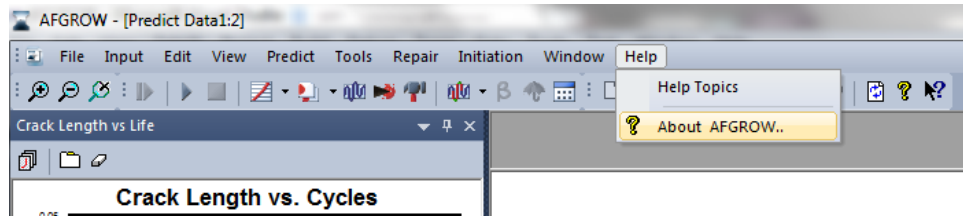
1. Open start and select all programs. (for windows 8 right click on AFGROW Icon in start menu and select open file location).



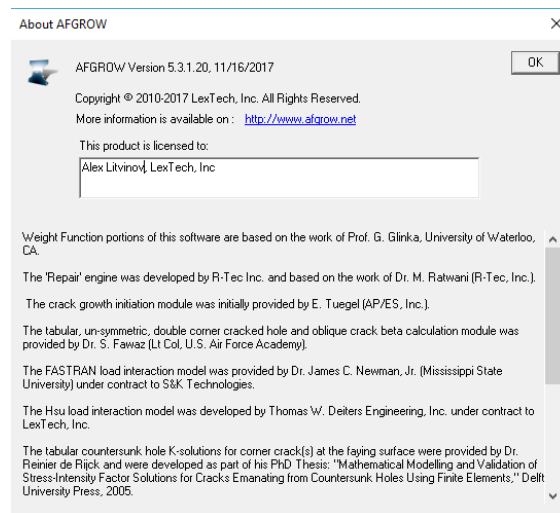
2. Select AGROW and then License Helper. The window below will appear



3. Copy and send the host id to LexTech and LexTech will generate the AFGROW license file and send it back
4. Place the AFGROW license file into the AFGROW installation directory (for example: C:\Program Files\AFGROW or C:\Program Files (86)\AFGROW).
5. To verify that AFGROW found the license file, open AFGROW, and select the menu item: “Help – About Afgrow”

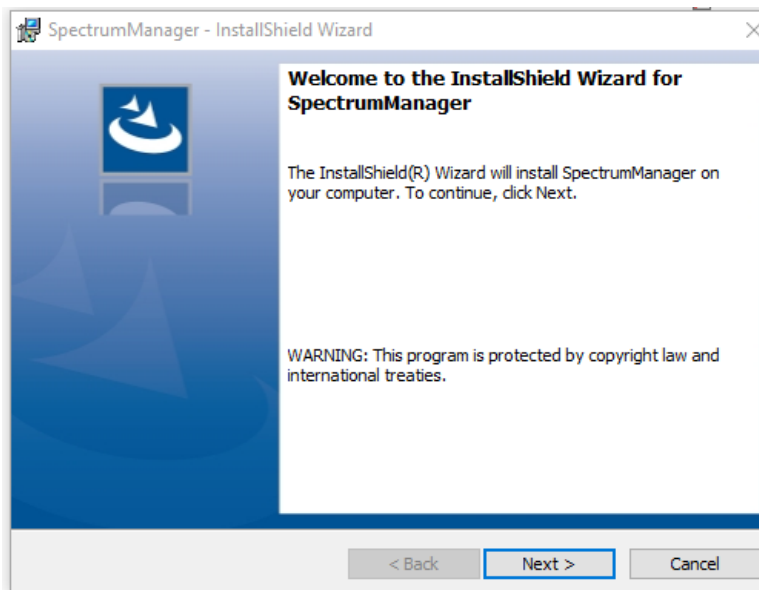


6. The licensee information will be displayed in the “About AFGROW” dialog

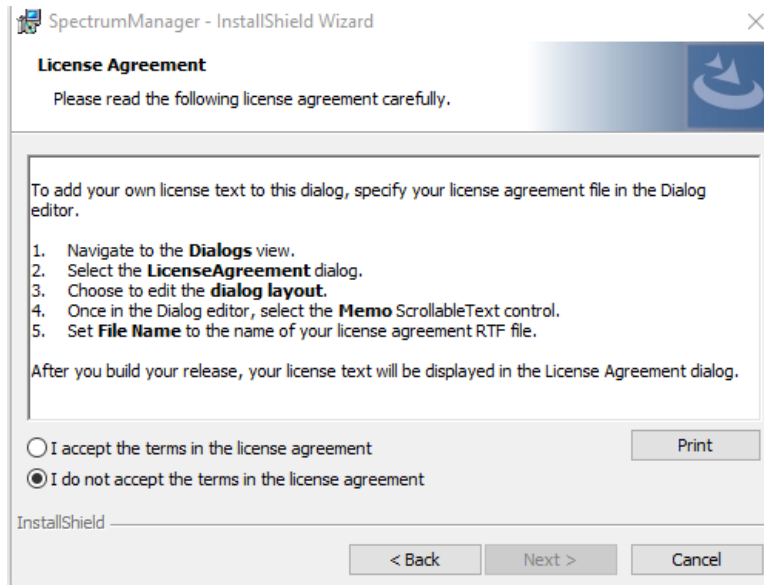


Spectrum Manager Installation

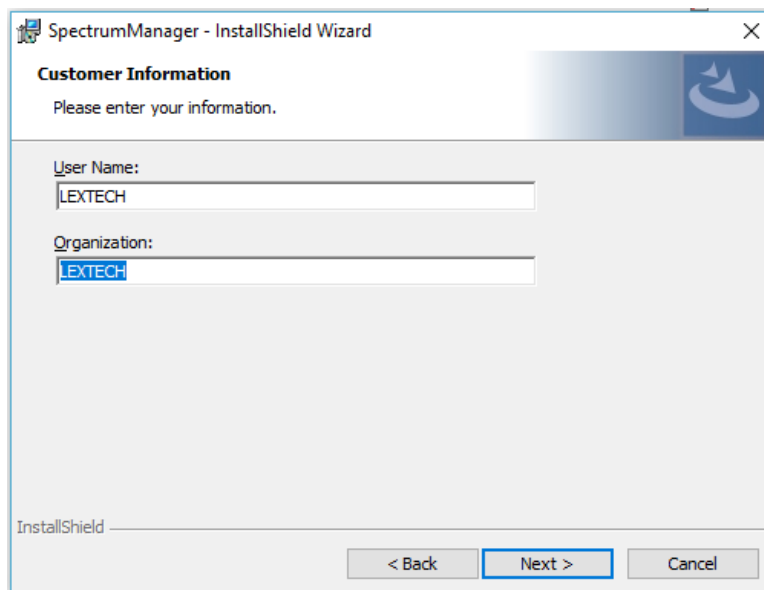
Spectrum Manager installs on Windows 10, 8, 7, VISTA SP2, and XP. Begin installation by running the setup.exe file. If you have downloaded the zipped Spectrum manager installation file, extract the contents in a temporary directory and run the setup program from that location. When the installation begins, it may take some time before the first installation dialog appears.



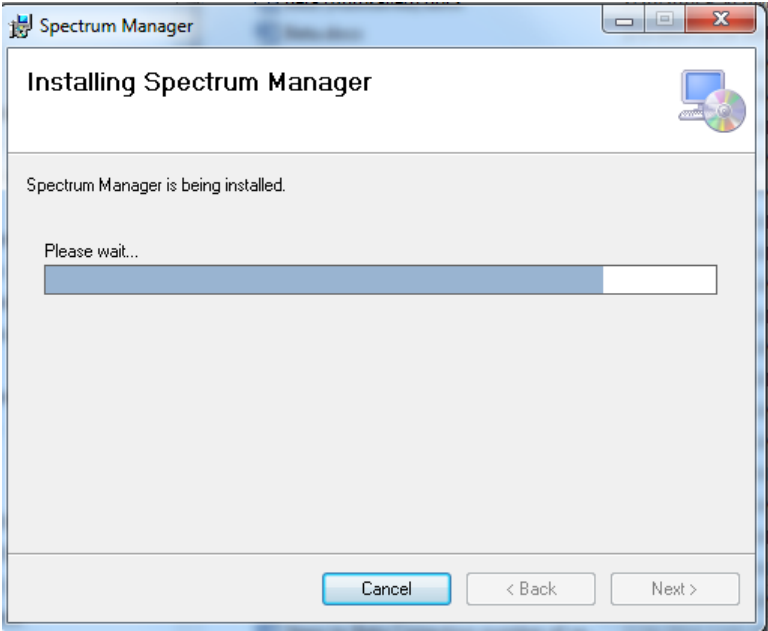
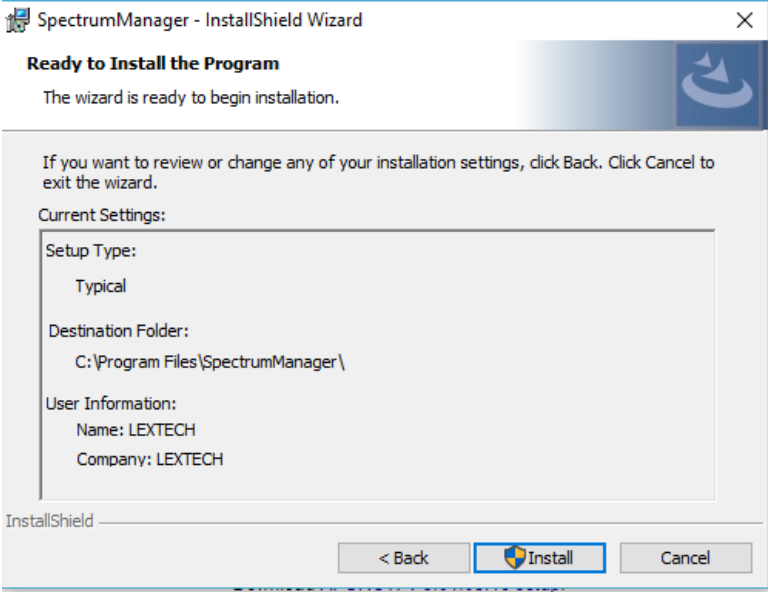
Next, the installer will prompt you to read and accept the license agreement.



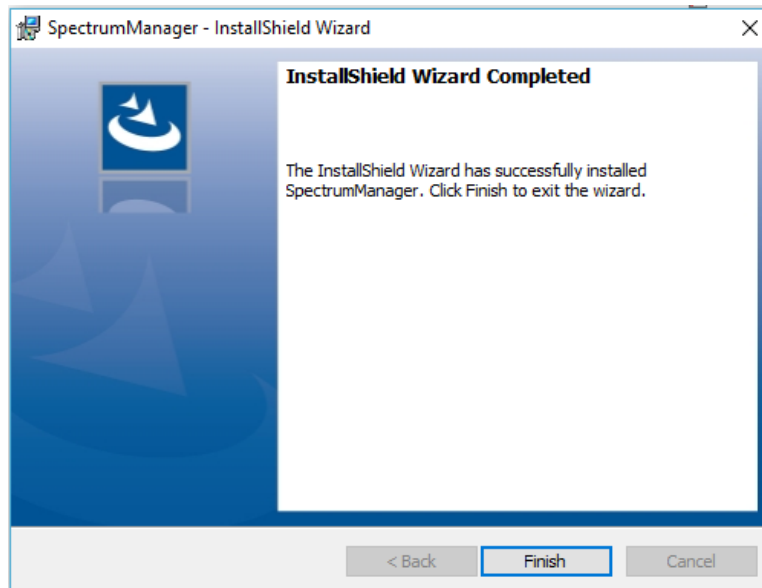
Once you have read and accepted the license agreement, select “Next” and a dialog will appear for you to enter your information.



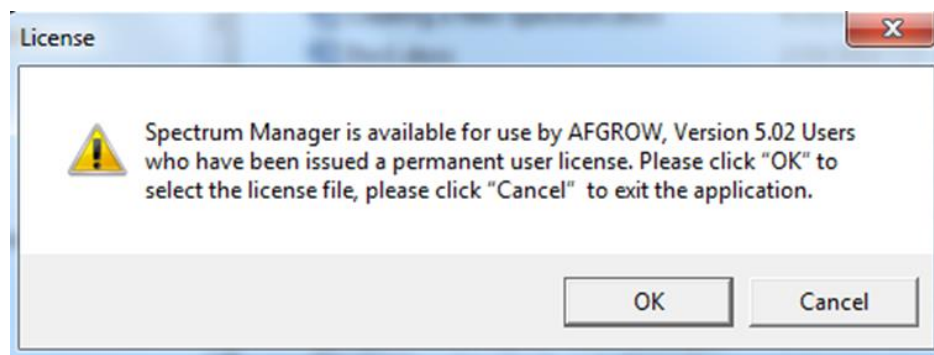
Spectrum manager is now ready to install. Review the information in the window and make sure everything is correct, then select “Install” to begin the installation process.



When finished, the final Wizard dialog is displayed and the user is prompted to select “Finish”.



Spectrum manager is only available for users with an AFGROW permanent user license. When starting Spectrum Manager for the first time, a dialog box will prompt the user to select the license file.



The AFGROW license can be found by right clicking on the AFGROW icon and selecting open file location. Open the license file to run Spectrum manager.

